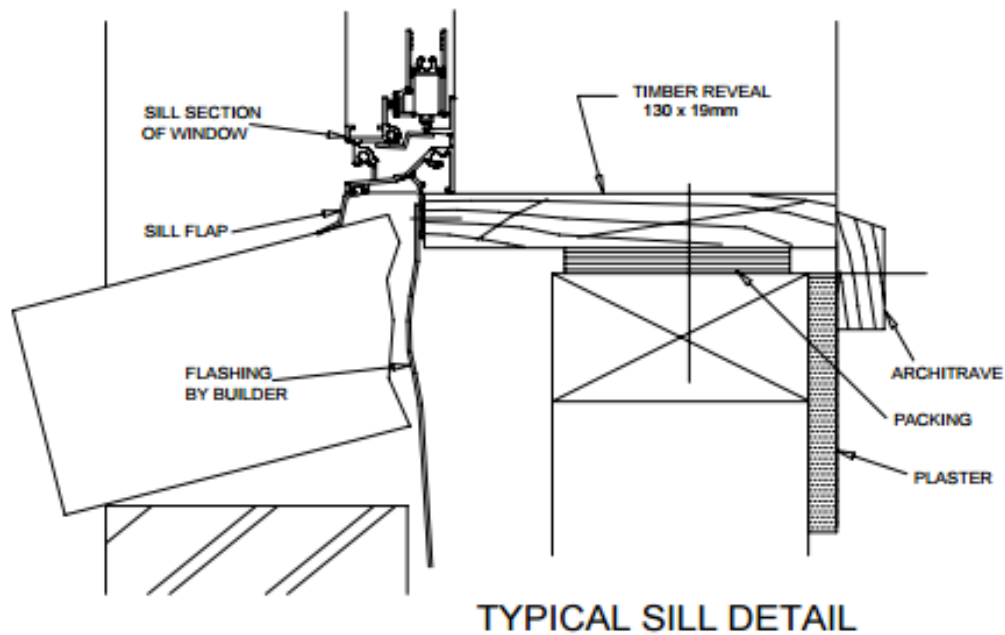
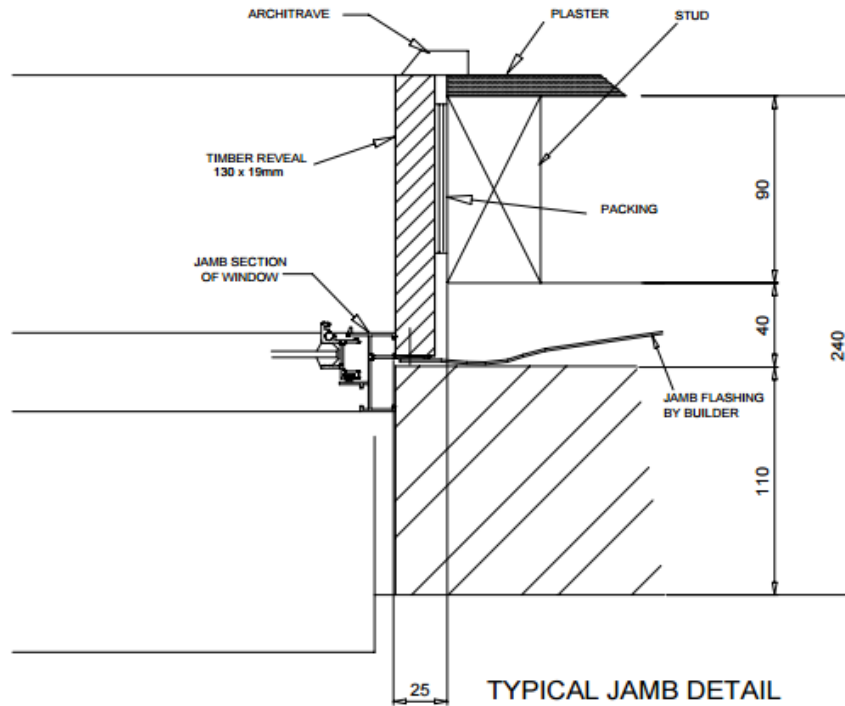


## Aluminium Sliding Windows 100 Series Installation Details: Brick Veneer



**IMPORTANT:** These instructions are a guide only and will provide you with diagrams installations 100 Series Aluminium Sliding Window. ASS2047 sets out requirements for installation of windows in buildings. It is the responsibility of the installer to properly adjust windows and doors as per instructions. Also note, the rollers on the sliding sashes may also need adjusting (up or down) once the window is installed – also being installer's responsibility.